

Asset Inventory Management with SCCM Expert's Inventory Manager

At a Glance

- GUI for customizing ConfigMgr 2007 inventory
- No MOF editing
- Open inventory rules exchange catalog
- Inventory Registry Keys and WMI classes
- Instant extension
- Huge time and cost savings

Customers Say

"Thanks for your help; your product has made the inventory side of my job so much easier! No more MOF scripts! I didn't realize how much I've been relying on INVMAN."

– Paul Ramsey, SCCM Supervisor, BMI

System Requirements

- Windows Server 2008 / 2003 / x86 / x64
- Windows 7 / XP / Vista / x86 / x64
- Supports Systems Management Server 2003

Manage, Extend and Customize Asset Inventory in Microsoft® System Center Configuration Manager 2007

Currently administrators manually edit code in sms_def.mof and configuration.mof to customize hardware and software inventory in Configuration Manager. This requires knowledge of the programming language and syntax used in these files. The work involved is time consuming, and susceptible to errors, which cause more headaches.

Solution

Inventory Manager (INVMAN) provides the ability to custom tailor Configuration Manager inventory to suit the needs of your company, and removes the complexities of editing configuration and reporting MOF files by means of an intuitive and easy to use graphical user interface (GUI).

INVMAN replaces the manual, text-based MOF editing process with a front-end editor that provides a GUI. Users can easily add, edit and remove inventory items from Configuration Manager. This rule-based management solution with easy to use wizards takes the guess work out of inventory configuration, and speeds up asset inventory management to a few minutes rather than several hours or possibly days.

Integrated Console GUI: See your inventory rule status and configuration with the built-in, integrated MMC snap-in add-on to the Configuration Manager console.

No Programming Required: Use an intuitive interface and wizards to create and manage inventory rules that automatically handle all MOF file editing.

Advanced Rule Workbench: Allows code level editing of MOF files. Features integrated MOFCOMP debug, Intellisense MOF editing and MOF syntax highlighting.

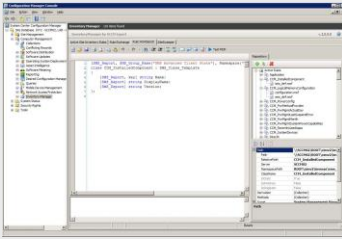
Inventory Rules Exchange: Import custom inventory rules from a public catalog provided by SCCM Expert. Share custom rules by exporting them back to the catalog.

Inventory Registry Keys and WMI Classes: Extend asset data with registry key data and WMI class data from client systems.

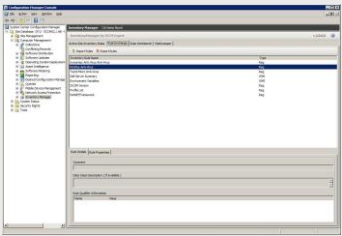
Instant Inventory Configuration Management: Instantly extend asset inventory with granular control over all asset properties configuration and reporting.

Huge Time and Cost Savings: Extend inventory rules in seconds not hours or days. Reduce change risk substantially. Simple to use, no training required.

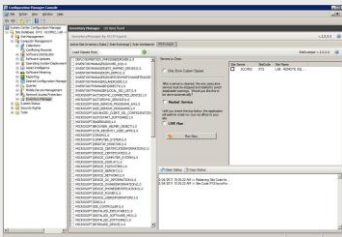
Advanced Workbench



Inventory Rules Exchange



Site Sweeper Integration



Registry Rules Wizard



www.sccmexpert.com
3205 Wenonah Avenue,
Berwyn, Illinois, 60402
Tel: +1 877 517 8435

Fine Tune your Asset Data: Save database space through granular reporting control over asset properties.

Key Features

- Easy granular management of hardware inventory
- Integrated into management console, intuitive easy to use wizards
- Import and export custom rules from open catalog
- Inventory Registry Keys and WMI Classes
- Built-in Registry Key selector wizard
- Built-in WMI browser class selector wizard
- Edit inventory reporting properties
- Add new inventory reporting rules, delete and restore existing rules
- Sync inventory rules to child sites
- Import MOF files
- WMI class and property descriptions displayed
- Manages sms_def.mof and configuration.mof files
- Site Sweeper integration

Cost Savings

Consider administrators make 25 inventory edits per year. We'll consider one gets better at programming edits, and divide overall cost of the manual method by half.

Sample Task: 1 rule with 5 registry key inventory items:

Legacy / Manual Method: Time 24 hours, Cost \$2040. 25 edits = \$25,500 per year.
INVMAN: Time 3 minutes, Cost \$4.25. 25 = \$106.25. **Save \$25,393.75 per year.**

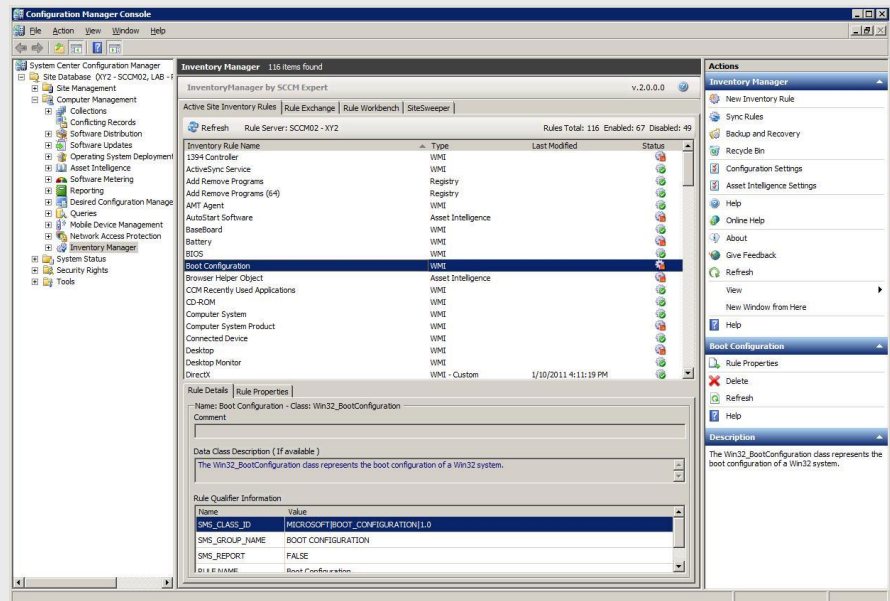


Figure 1: INVMAN MMC Console

Visit www.sccmexpert.com or call +1 877 517 8435 to learn more about INVMAN.